

Clark Development Corporation

CLARK FREEPORT ZONE

The Perfect Business Catalyst



INVEST
Philippines
Your Business. Our People.

Clark Freeport Zone

- ▶ Once the largest US Military Base Outside Mainland US
- ▶ It has since been converted to a Special Economic and Freeport Zone, comprised of 31,400 hectares

- ▶ **Special Economic Zone**

(27,000 hectares)

- ▶ **Freeport Zone**

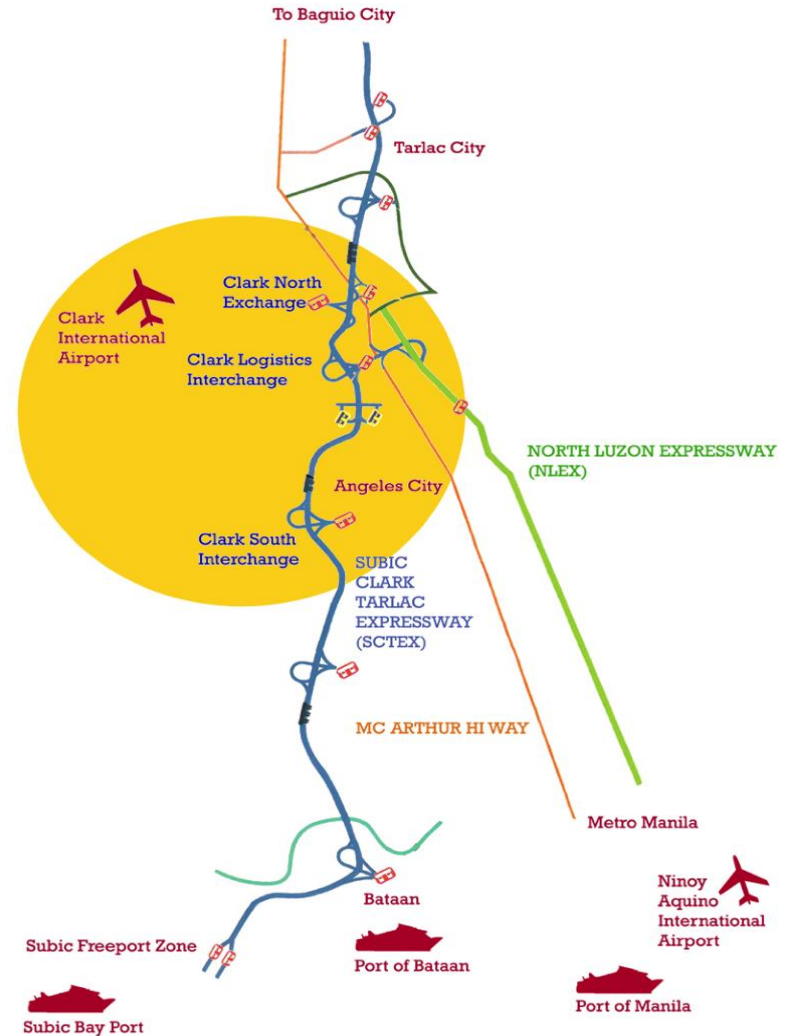
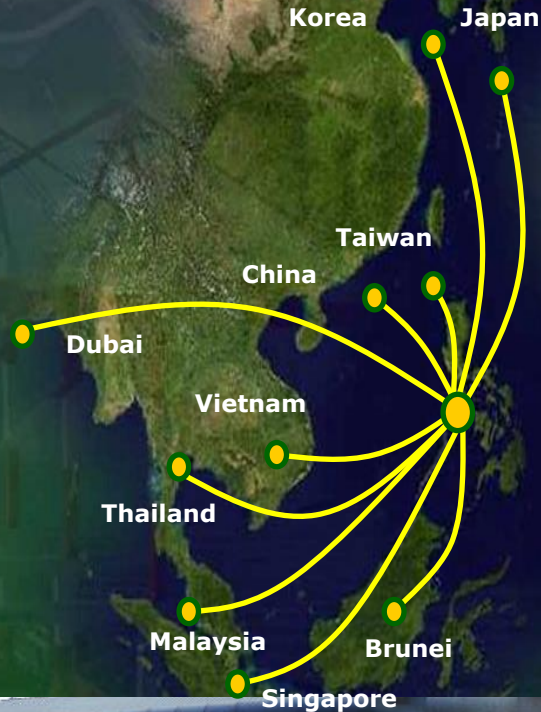
(4,400 hectares)



Where is Clark Freeport?

Clark is between 2 to 4 hours away from Hong Kong, Taiwan, Singapore, Japan, Korea and other major Asian destinations.

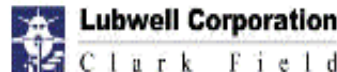
It is accessible via 2 international airports (CRK and MNL) and 3 major seaports: Port of Bataan, Port of Subic and Port of Manila.



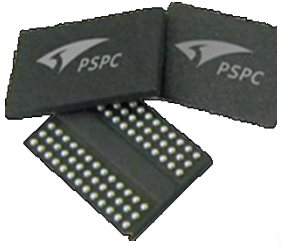
836 CLARK LOCATORS

Some of the Big Names Located in Clark are:

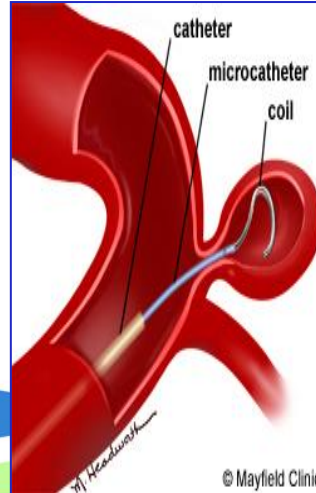
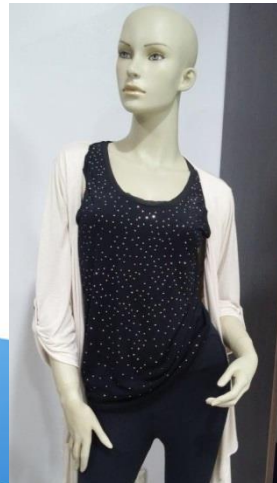
Employment of 87,765 and exports of \$8 billion per year



MADE IN CLARK



||| DÜBÖR |||



Priority Projects

Aimed at generating additional employment of 20,000 to 30,000 over the next 3 years

▶ MANUFACTURING ▶ LOGISTICS

- ▶ Semiconductor
- ▶ Computer Design
- ▶ Wiring Harness
- ▶ Garments

▶ TOURISM & HOSPITALITY ▶ SERVICES

- ▶ Airlines
- ▶ Aircraft Parts
- ▶ Light Manufacturing
- ▶ Car Parts
- ▶ Schools
- ▶ Restaurants
- ▶ Banks
- ▶ ICT/BPO



CFZ Locators By Industry Per Nationality CY2016

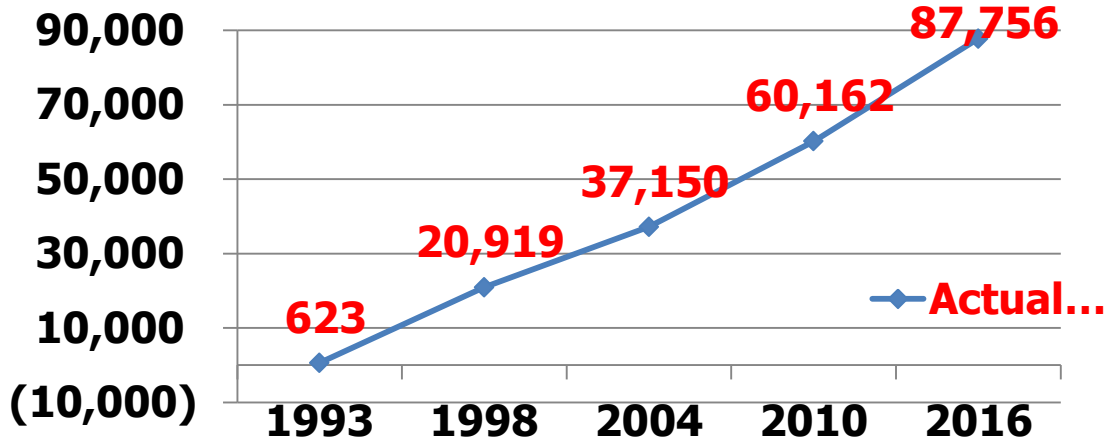
INDUSTRY	Agro-Industrial	AviationRelated	Commercial	Developer	ICT Industry	Industrial	Institutional	Logistics	Service	Tourism	Utility	Total
Philippines	3	19	163	9	31	46	27	33	125	21	12	489
Korea	1		9	1	11	14	7		26	20		89
USA		1	2	2	22	14		3	7	1		52
Europe		4	2		12	13	1	3	6			41
Australia					26	10	1		1	1		39
Japan				1	1	27		6	2	1		38
Other - Asia		4	3	1	10	11	1	2	8			40
North America			1	2	3	6	1	2	2	2	1	20
Taiwan				1	1	12				1		15
China						5	1		2			8
Canada			1		2	2						5
TOTAL	4	28	181	17	119	160	39	49	179	47	13	836

CFZ Locators	Total
2015	824
As of June 2016	836

Locators Per Incentives			
Full	Limited	None	Total
361	102	373	836

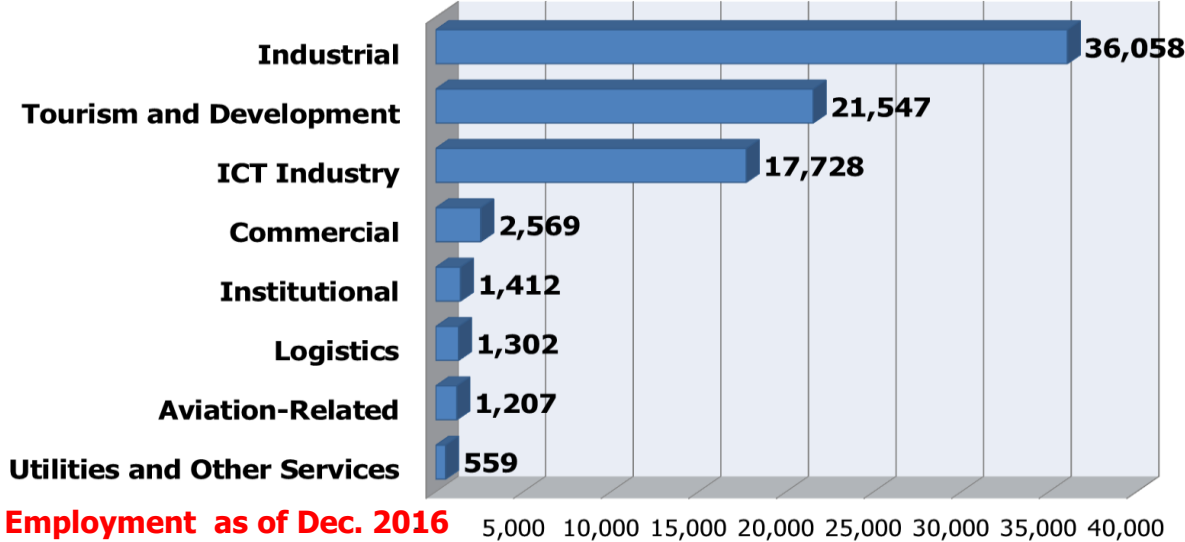


Actual Employment



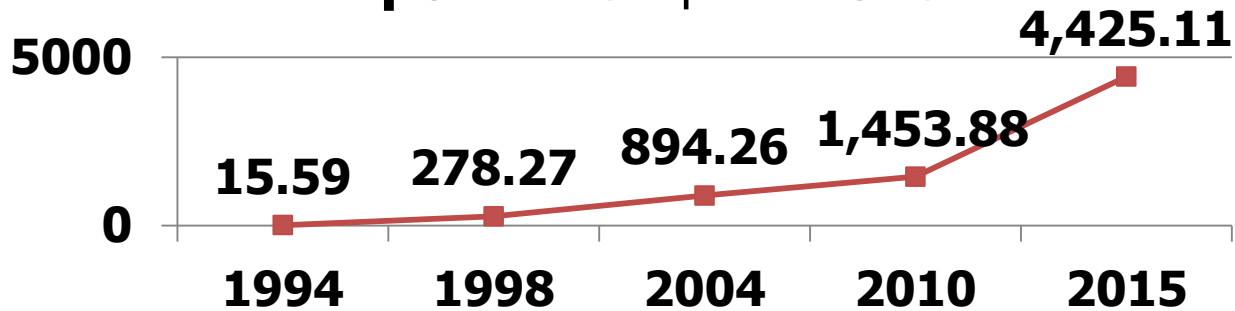
Year	Actual Employment
1993	623
1994	4,783
1995	10,811
1996	15,183
1997	22,170
1998	20,919
1999	22,427
2000	21,964
2001	22,046
2002	26,307
2003	27,082
2004	37,150
2005	36,819
2006	47,432
2007	51,473
2008	57,777
2009	58,014
2010	60,162
2011	64,055
2012	71,073
2013	72,616
2014	75,538
2015	82,382
2016	87,756

Actual Employment Per Industry



Export

Export in US\$ Millions



Top 10 Exporters (Jan-Jun 2016)

	CFZ Locator		Export
1	PSPC	(47%)	\$ 622.0M
2	Nanox	(20%)	267.0M
3	Yokohama	(10%)	133.0M
4	SMK	(4%)	59.0M
5	L&T	(4%)	58.1M
6	Amertron	(2%)	28.9M
7	Charter Link	(1%)	12.2M
8	Outback Five Star	(1%)	11.8M
9	HLD Clark	(1%)	9.5M
10	La Rose Noire	(1%)	7.7M
11	Others (121)	(9%)	\$113.0M

2015 Total Working Expats: 3,682

Nationality	Expat	Nationality	Expat
1. Chinese	2,424	11. Malaysian	29
2. S. Koreans	464	12. Israeli	16
3. Taiwanese	150	13. French	16
4. Japanese	126	14. Singaporean	16
5. American	113	15. Italian	11
6. Australian	65	16. Brazilian	10
7. Indian	55	17. Indonesian	9
8. British	46	18. Dutch	6
9. Ukranian	46	19. Vietnamese	6
10. Canadian	31	20.OTHERS	43

Plus:

320	Dependent's visa holders (spouses and children below 21y/o)
569	Student Permit



Cost of Doing Business

ITEM	RATE
Indicative Lease Rate Per Square Meter Per Month	
➤ Industrial	US \$ 0.65
➤ Commercial	US \$ 2.00
Power Rate Per KWH	Php 7.00
Water And Sewerage Rate Per cu.m.	
First 0-10 cu.m	Php 209.70
Next 11-20 cu.m	22.58
Next 21-30 cu.m	23.91
Above 31 cu.m.	25.23
(Sewer charges - 40% of water bill)	
Minimum wage	Php 364.00

Top Developers

Locator	Size (Has)	# of SLs	Total jobs
Berthaphil, Inc.	47.5	167	14,479
CPIP	50.4	6	11,318
Philexcel Inc.	46	205	10,130
Premier Central, Inc. (SM)	16.5		5,809
Linaheim Corporate Services	8.8	2	1,864
Global Gateway Corporation	167	3	1,587
MSK Group Work Clark	4.5	2	1,374

Top Employers

Locator	Jobs
Nanox Philippines, Inc.	6,439
Luenthai Group, Phils.	5,004
Sutherland Global Svs, Inc.	4,716
IQOR Philippines, Inc.	4,433
SMK Electronics (Phils.)	3,170
Yokohama Tire Phils., Inc.	3,164
Phoenix Semiconductor Phils, Inc.	2,548
TI Phils., Inc.	1,805

Aderans, Phils. Inc.	1,402
----------------------	-------



FREEPORT PHILIPPINES



Our Value Proposition

- Safety and Security
- Rich Labor Pool
- Good Governance
- Time-Efficient Zone
- Clark's Connectivity to the World
- Clark's Infrastructure & Utilities
- Clark as a Tourism Hub
- Clark Incentives

Safe and Secure



- With a state-of-the-art CCTV System
- With its own security and police, and detachments, Philippine Air Force presence, and fire-fighting brigade
- Within a secured, fenced area
- With tertiary care hospitals

**Clark is FAR from
Manila trench**



LESS SUSCEPTIBLE to strong



**CLARK is
FLOOD FREE**

**155 meters Above Mean Sea Level
(AMSL)**



Rich Labor Pool

- Highly-Skilled, English-Proficient Manpower
- Over 12M population in the surrounding areas of Clark Freeport
- 8 Educational Institutions inside Clark Freeport
- More than 200 leading colleges, universities and technical schools in surrounding areas
- >40,000 annual graduates in Region III
- Human capital index comparable to South Korea and Singapore

(World Economic Forum 2015)



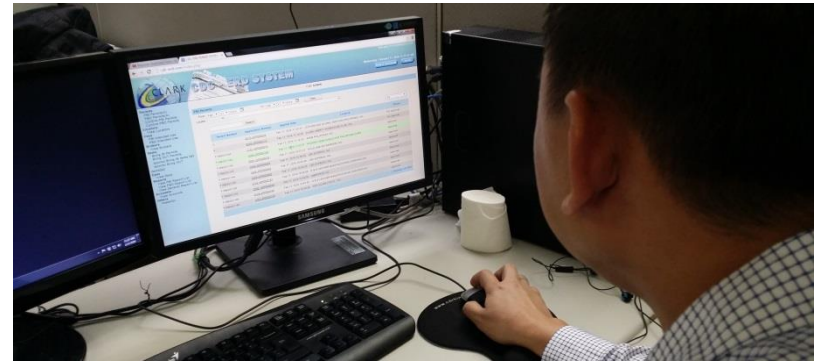
Awards



**2015 ASIA CEO Awards
Executive Leadership Team of the Year**

Good Governance

- “No Gift” Policy / No corruption
- Customer-centric Practices and Innovations
 - ✓ Business Enhancers than regulators
 - ✓ Automated Processes
 - ✓ 3-Year Business Permit
 - ✓ Job-pooling and matching services for locators
 - ✓ Issuance of Special Working Visas
- Green Policy
- CSR Advocacies
 - ✓ Regular Job Fairs
 - ✓ Trainings
 - ✓ Community Service Programs
 - ✓ Employee Development



Recognitions



- 2014 Bespoke Awards-Asia from FDI Magazine, Commended for Reduction in Red Tape.
- 2015 Best Social Enterprise Award under the Social Innovation Category during the Golden Globe Tiger Summit 2015 in Kuala Lumpur, Malaysia.
- Ranked 8 among Top 50 Freeport Zones of the Future 2012/13 Category.
- Ranked 3 among the Top 5 Airport Zones in the World by FDI Magazine.


Time-Efficient Economic Zone

Everything within reach in
10-15 minutes



Clark's Connectivity to the World

International and Domestic Flights
125 Flights per week

 **Asiana Airlines**
Daily to Incheon



Cebu Pacific
Hong Kong – daily
Singapore – daily
Macau – 4x a week
Cebu – 3x a week

 **Dragon Air**
Hong Kong – 3x a week



Tiger Air Philippines
Singapore – 5x a week

DRAGONAIR



Jin Air
Daily to Incheon
Daily to Busan



Qatar Airways
Daily to Doha



Emirates
Daily to Dubai

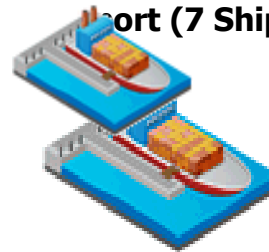


Clark is "supply chain friendly"



23 cargo flights weekly

Accessibility to Manila Port, Batangas Port and Subic Port (7 Shipping lines)



- Maersk
- NYK
- KLINE
- American President Lines
- MCC Transport
- Wanhai
- SITC China



Clark's Infrastructure & Utilities

State-of-the-Art Facilities

- 100-hectare landfill facility
- Entrance station with weighbridge
- Road Network
- Recycling and waste treatment facilities
- Environmental buffer zones / re-greening zones
- Materials recovery facility
- Industrial Gas Providers



Power

- New 230 KV transmission lines

Water

- Treated water
- Waste water treatment facility

Telecoms

- Dual fiber-optic backbone
- Digital exchange system connecting to more than 200 countries



Clark's advantages as a TOURISM hub

EXISTING TOURISM FACILITIES

- ✓ more than 2,000 luxury rooms
- ✓ more than 40 meeting rooms (40 to 3,000 seating capacity)
- ✓ 51 local and international restaurants
- ✓ other upcoming facilities



And an exciting variety of tourism destinations within and outside Clark

Clark: A Work-Live-Play Environment



TAX AND FISCAL INCENTIVES

Fiscal and Non-Fiscal

- No local and national taxes except for 5% tax Gross Income Earned
- Duty Free Importation of Equipment and Raw Materials
- Exemptions from Real Property Tax
- Free Movement of Finished Goods within the Freeport
- Special Visas for Investors



*Let us be the catalyst for your
business success*

MAKE YOUR GLOBAL MARK
MAKE IT CLARK

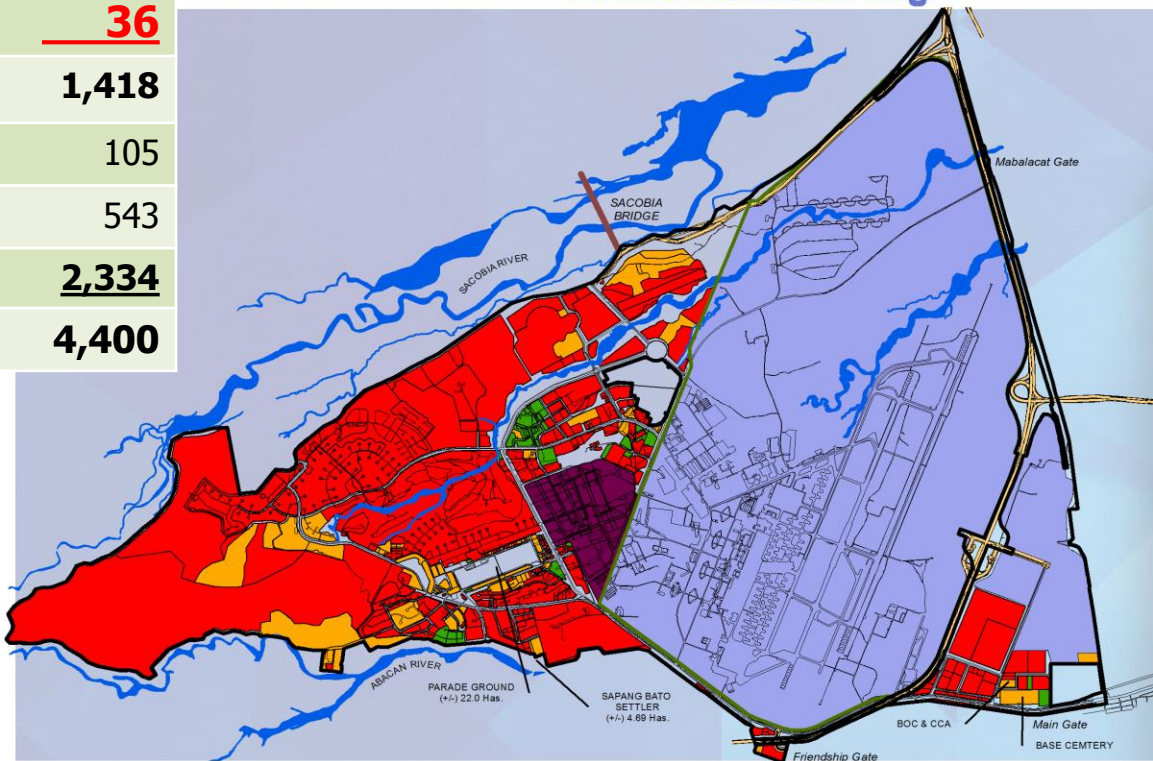


Clark Freeport Zone Map

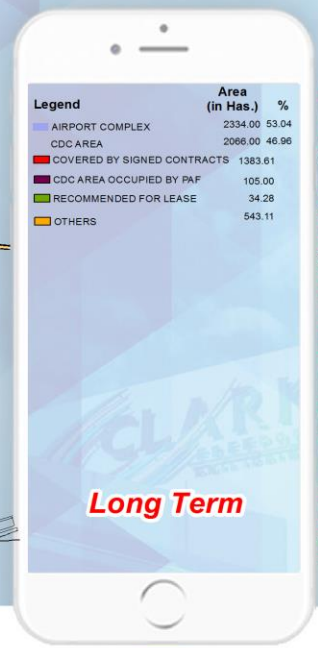
Land Allocation	Hectares
Leased Area	1,382
Available	<u>36</u>
Sub-Total	1,418
PAF Area	105
Others	543
CIAC Area	<u>2,334</u>
TOTAL	4,400

Land Allocation Map

As of End of June 2016



iCLARK
Your mobile gateway for Clark Freeport Zone



Visit Google Play or App Store and search for "Clark Freeport" Download the Free App Today!



LandAllocation2016_It(5colors)

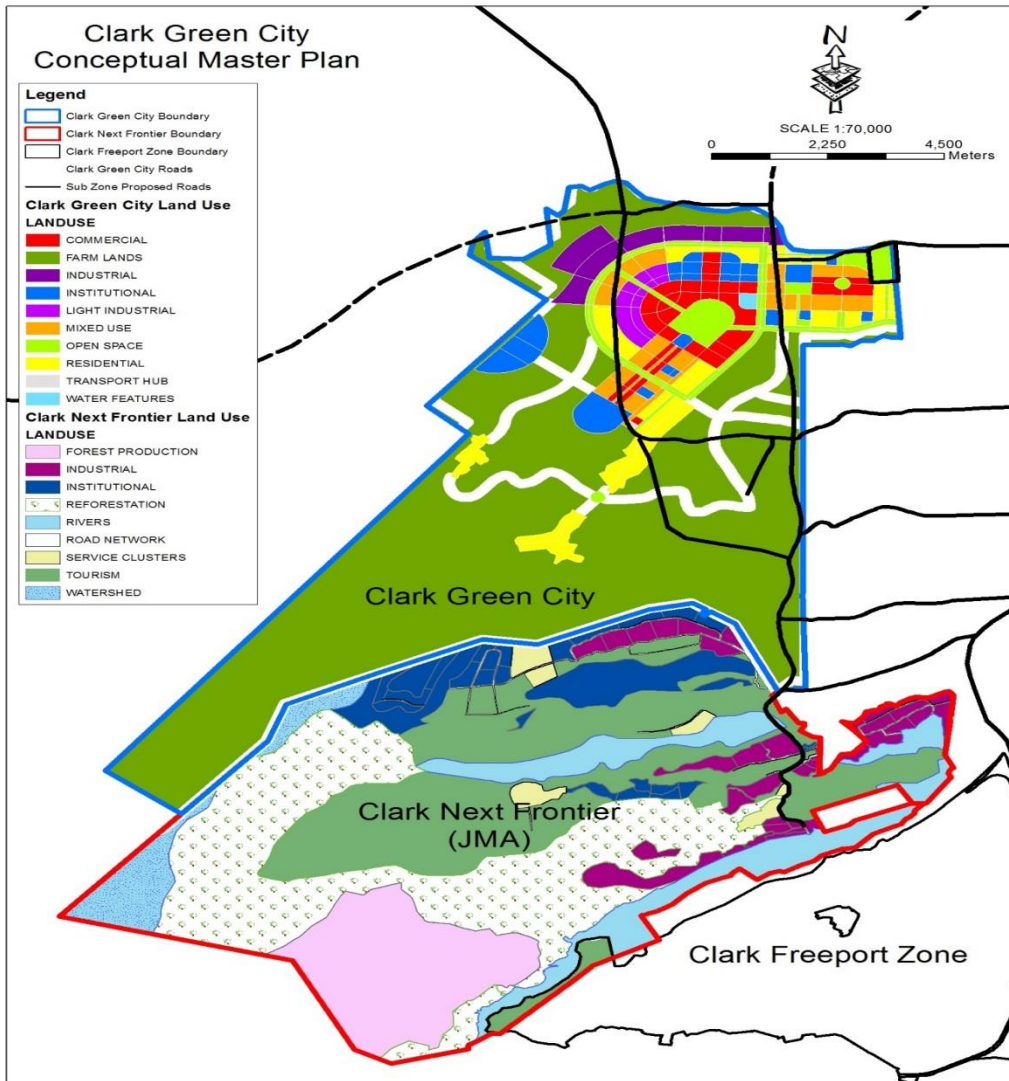


Scale 1 : 60,000
0 600 1,200 Meters

Prepared by: GIS Section - Information Technology Department



Your Business. Our People.



■ INDUSTRIAL

Featuring “green” industries that leverage on local trade and environmentally-sensitive approach

■ COMMERCIAL

The Financial Center located at the heart of the metropolis serves as the main business hub of Clark Green City

■ PUBLIC REALM

Public spaces designed to be enjoyed by all residents & visitors of CGC; features a large Central Park which doubles as a flood-mitigation measure

■ RESIDENTIAL

Will cater to the housing requirements of the city for different segments of the population

■ INSTITUTIONAL

Includes a Government Center to provide a business-ready atmosphere for private investors; other areas cater to educational, healthcare and R&D

■ FARMLANDS

Agriculture-centered communities with adequate support facilities

Clark Green City Map